

4.1 INTRODUCTION

This chapter provides an inventory of community facilities, parkland, and open space within the study area and evaluates the potential for the No Action and Build Alternative to affect such resources and the services they provide. The analysis considers the same study areas as identified in Chapter 3, “Land Use, Zoning, and Public Policy.” Community facilities include publicly-accessible or publicly-funded facilities or services such as police and fire stations, schools, hospitals, nursing homes, day care centers, and libraries. Parkland and publicly-accessible open spaces are also addressed in this chapter. Parkland means land acquired, developed, and/or used for recreation and conservation purposes, and includes funded and unfunded parkland (NJDEP 2011). Open space is defined as publicly or privately-owned land that is publicly accessible and available for leisure, play, or sport, or is set aside for the protection and/or enhancement of the natural environment. Open space can be described as active or passive—active open space is used for sports, exercise, or active play and passive open space is used for relaxation, such as sitting or strolling.

The inventory was created to support the land use analysis prepared in accordance with the *Guideline on Air Quality Impact Modeling Analysis* (NJDEP 2009). The inventory identified centers where the elderly, young or the infirmed congregate. This chapter also evaluates the applicability of additional laws and permits that pertain to parkland—including the New Jersey Green Acres Program, which includes properties subject to Section 6(f) of the Land and Water Conservation Fund Act (16 U.S.C. § 460 [2005]).

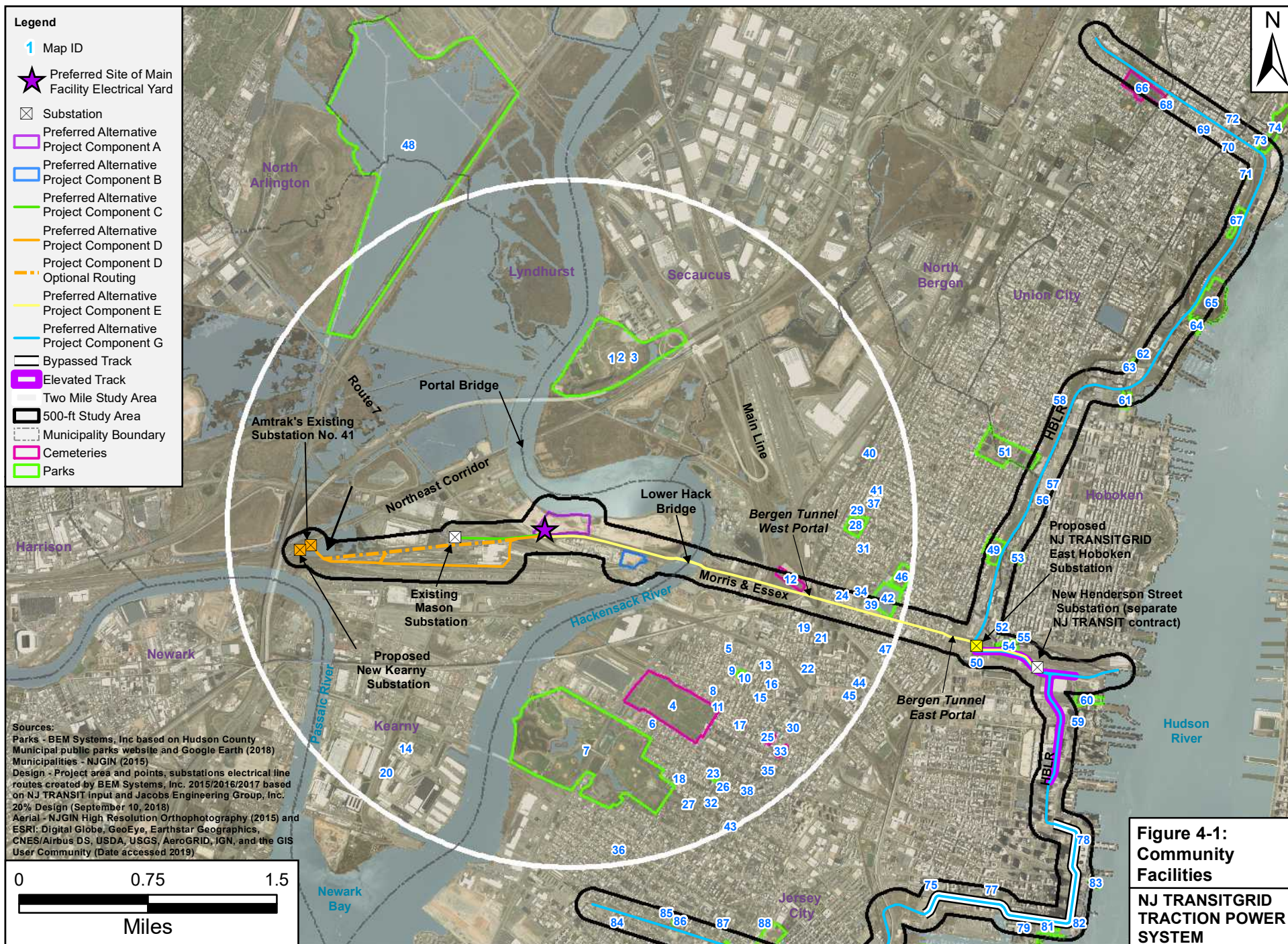
Since the Build Alternative would not include residential construction or new transit service that would induce additional development, it would not place additional demand on community services such as schools, parks, or hospitals. A description of the extent to which the Build Alternative would influence the local police and fire departments and emergency medical service response to an event at the facilities within the study area is addressed below.

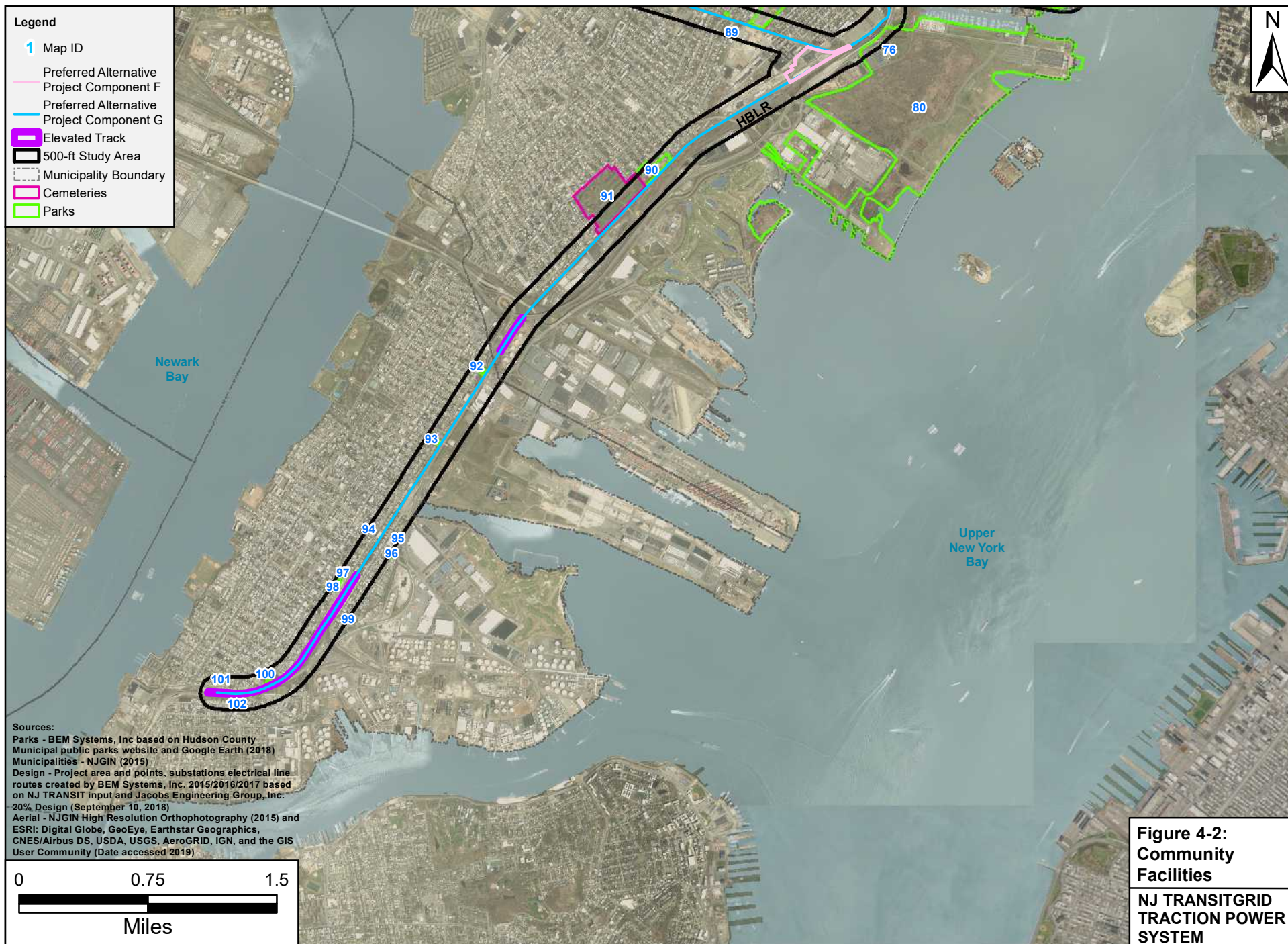
4.2 AFFECTED ENVIRONMENT

Community facilities as well as parklands, open spaces and cemeteries in the study areas for Project Components A through G are listed in Table 4-1 and are identified by Map ID # on Figures 4-1 and 4-2.

4.2.1 Project Area Plus 500-Foot Buffer

Due to the heavy industrial nature of the area, no community facilities or parks are located within the 500-foot buffer in Kearny (Project Components A through D). In Weehawken, Jersey City, Hoboken, Union City, North Bergen, West New York and Bayonne. There are seventeen educational facilities (public and private), four fire departments, three healthcare facilities, three cemeteries and twenty-eight parks within 500 feet of Preferred Alternative Project Components E and G. Six of the educational facilities (Map ID #s 24, 39, 77, 78, 79, 82) are located within the 500-foot buffer where electrical lines will either travel through a tunnel or within the bypassed track section of Preferred Alternative Project Component G. One





fire department (Map ID #34) and one health care facility (Map ID #75) is also located within the 500-foot buffer of Preferred Alternative Project Components E and G where the electrical line would pass underground through the Bergen Tunnels or within the bypassed track. One of the three cemeteries (Map ID #66) is located within the 500-foot buffer of Preferred Alternative Project Component G where the electrical line would pass through the Weehawken Tunnel. Of the twenty-eight parks, three (Map ID #s 42, 83, and 81) are within sections of Preferred Alternative Project Components E and G where the electrical line would pass underground through the Bergen Tunnels or within the bypassed track. These facilities within tunnel or bypassed track sections are not included in the 500-foot buffer area discussion below.

Educational and Day Care Facilities

There are 11 educational and day care facilities located within the 500-foot buffer of Preferred Alternative Project Component G where the electrical line would be installed through a combination of monopoles (maximum of 39 feet tall), underground duct banks, or attached to existing infrastructure (i.e., HBLR elevated tracks). These educational and day care facilities are summarized below and are listed in Table 4-1.

The Viaquenti Academy (Map ID #50) - The Viaquenti Academy is a private school serving children from the age of three months (in the form of day care, early pre-school, pre-school, and pre-kindergarten) through second grade. It is located at 837 Jersey Avenue in Jersey City. It has a licensed capacity of 105 children.

The Learning Experience (Map ID #56) – The Learning Experience is a private school serving children from the age of six weeks through eight years, located at 900 Monroe Street in Hoboken. It has a licensed capacity of 161 children.

The Smart Start Academy (Map ID #57) – The Smart Start Academy is a private school serving children from the age of six months through nine years (in the form of infant programs through pre-kindergarten, day care, and after school programs for children until the age of 9), located at 552 9th street in Hoboken. It has a licensed capacity of 73 children.

The River School Newport (Map ID #59) – The River School Newport is a private school serving children from the age of eight weeks through six years (corresponding to day care through pre-kindergarten), located at 30 Newport Parkway in Jersey City. There are currently approximately 160 students enrolled for the 2018-2019 school year. It has a licensed capacity of 175 children.

The Liberty Science Center (Map ID #76) – The Liberty Science Center is a 300,000 square foot interactive science museum and learning center that accepts guests of all ages, located at 222 Jersey City Boulevard in Jersey City. More than 750,000 students, teachers, and parents visit the Liberty Science Center each year.

Advanced Services International DayCare Center (Map ID #84) – Advanced Services International DayCare Center is an adult day care that accepts senior citizens and disabled adults over 18 years of age, located at 49-51 Morton Place in Jersey City.

The Learning Tree (Map ID #86) – The Learning Tree is a private school designed for young children. It offers child care/ day care, pre-school, and pre-kindergarten services, and is located at 411-413 Martin Luther King Drive in Jersey City. It has a licensed capacity of 30 children.

Lincoln Community School #5 (Map ID #95) – Lincoln Community School #5 is a public-school serving pre-kindergarten through eighth grades, located at 208 Prospect Avenue in Bayonne. Enrollment is 481 students in the 2018-2019 school year.

Nicholas Oresko Community School #14 (Map ID #97) - Nicholas Oresko Community School #14 is a public-school serving pre-kindergarten through eighth grades, located at 33 East 24th Street in Bayonne. Enrollment is 466 students in the 2018-2019 school year.

Beacon Christian Academy (Map ID #99) – The Beacon Christian Academy is a private school serving pre-school through eighth grades and includes over 80% children of color. It is located at 21 West 8th Street in Bayonne and has 184 students enrolled for the 2018-2019 school year.

Bayonne Head Start Program (Map ID #102) – Bayonne Head Start Program is a public program for low-income and special needs children from the age of three to five years to succeed in future schooling. It has a licensed capacity of 89 children.

Law Enforcement and Fire Departments

There are four fire departments and no law enforcement facilities located within the 500-foot buffer of Preferred Alternative Project Components E and G where the electrical line would be installed through a combination of monopoles (maximum of 39 feet tall), underground duct banks, or attached to existing infrastructure (i.e., HBLR elevated tracks). These facilities are summarized below and are listed in Table 4-1.

Hoboken Fire Department (Map ID #55) – The Hoboken Fire Department (Engine Company 1/Ladder Company 2) is located at 43 Madison Street in Hoboken near Hoboken Yard and within the 500-foot buffer of Preferred Alternative Project Component E.

North Hudson Regional Fire and Rescue 3 (Map ID #63) – The North Hudson Regional Fire and Rescue 3 is located at 1900 Willow Avenue in Weehawken within the 500-foot buffer of Preferred Alternative Project Component G.

North Hudson Regional Fire and Rescue Ladder 3 (Map ID #70) – The *North Hudson Regional Fire and Rescue Ladder 3* is located at 4610 Park Avenue in Weehawken within the 500-foot buffer of Preferred Alternative Project Component G.

North Hudson Regional Fire and Rescue Squad 1/Battalion 2 (Map ID #72) – The North Hudson Regional Fire and Rescue Squad 1/Battalion 2 is located at 4911 Broadway in West New York and is within the 500-foot buffer of Preferred Alternative Project Component G.

Health Care and Emergency Services

There are two health care facilities located within the 500-foot buffer of Preferred Alternative Project Component G where the electrical line would be installed through a combination of monopoles (maximum of 39 feet tall), underground duct banks, or attached to existing infrastructure (i.e., HBLR elevated tracks). These facilities are summarized below and are listed in Table 4-1.

Metropolitan Family Care Hospital (Map ID #89) – Metropolitan Family Care hospital is located at 935 Garfield Avenue in Jersey City within the 500-foot buffer of Preferred Alternative Project Component G where the electrical line would be installed through a combination of monopoles (maximum of 39 feet tall), underground duct banks, or attached to existing infrastructure (i.e., HBLR elevated tracks).

Bayonne Medical Center (Map ID #94) – Bayonne Medical Center is located at 29 East 29th Street in Bayonne within the 500-foot buffer of Preferred Alternative Project Component G where the electrical line would be installed through a combination of monopoles (maximum of 39 feet tall), underground duct banks, or attached to existing infrastructure (i.e., HBLR elevated tracks).

Cemeteries

There are two cemeteries located within the 500-foot buffer of Preferred Alternative Project Component G where the electrical line would be installed through a combination of monopoles (maximum of 39 feet tall), underground duct banks, or attached to existing infrastructure (i.e., HBLR elevated tracks). These educational and day care facilities are summarized below and are listed in Table 4-1.

Saint Peters Cemetery (Map ID #12) – The Saint Peters Cemetery was established in 1849 at 309 Tonnelle Avenue in Jersey City. The cemetery is approximately 4.29 acres in size and is no longer active. As this is also a Historic Resource, it is further discussed in Chapter 9, “Historic Resources.”

Bay View New York Bay Cemetery (Map ID #91) – Bay View New York Bay Cemetery is located at 321 Garfield Avenue in Jersey City and was established in 1848. It extends to the sloped terrain from Garfield Avenue to the bottom of a hill that oversees New York City. The cemetery is still operational.

Parkland and Open Space

There are currently no publicly-accessible parks or open space near Preferred Alternative Project Components A, B, C, or D. As noted in Chapter 3, “Land Use, Zoning, and Public Policy,” two planned residential developments near Project Component E will include publicly-accessible open space:

- The former Van Leer Chocolate Factory residential condominium complex will include a 1.5-acre public park. This development is currently under construction.

- Along Coles Street, about 5.5 acres of land will be redeveloped into a large mixed-use development with a two-acre public park. While this project has been approved by Jersey City, a construction start date is not currently available from the developer.

The twenty-eight parks that are located within the 500-foot study area of Preferred Alternative Project Components E, F, and G are summarized below and shown on Figures 4-1 and 4-2. Note that only the Liberty State Park (Map ID #80) is located within the 500-foot study area of both Preferred Alternative Project Components F and G while Southwest (Map ID #52), and Gateway (Map ID #54) Parks are the only parks within the 500-foot study area of both Preferred Alternative Components E and G. All other parks discussed below are partially or completely located within the 500-foot buffer of Preferred Alternative Project Component G where the electrical line would be installed through combination of monopoles (maximum of 39 feet tall), underground duct banks, or attached to existing infrastructure (i.e., HBLR elevated tracks).

Riverview-Fisk Park, Jersey City (Map ID #49) – Riverview-Fisk Park, encompassing 8.55 acres, is owned by the City of Jersey City and is located on Ogden Avenue. It consists of multiple basketball courts and a playground. It also has a view of the Hudson River waterfront and New York City skyline.

Washington Park, Jersey City and Union City (Map ID #51) – Washington Park, encompassing 26.55 acres, is owned by Hudson County and is located along Central and New York Avenues within Jersey City and Union City. It consists of four baseball fields, nine tennis courts, a basketball court, and a playground.

Southwest Resiliency Park, Hoboken (Map ID #52) – Southwest Resiliency Park encompassing 0.69 acres, is owned by the City of Hoboken, and is located at 58 Jackson Street. It consists of a dog run, outdoor amphitheater, flower gardens, sitting areas with tables and benches.

Mama Johnson Field, Hoboken (Map ID #53) – Mama Johnson Field, encompassing 1.70 acres, is owned by the City of Hoboken and is located at 400 Jackson Street. It consists of a multi-use athletic field.

Gateway Park, Hoboken (Map ID #54) – Gateway Park, encompassing 2.74 acres, is owned by the City of Hoboken and is located on the corner of Newark and Jackson Streets. It consists of a grassy area with landscaped shrubbery.

Firefighters Memorial Park, Union City (Map ID #58) – Firefighters Memorial Park, encompassing 0.66 acres, is owned by the City of Union City and is located at 9th Street and Palisades Avenue. It consists of an Olympic sized pool with handicapped access, a children's wading facility, and a sprinkler playground. The park is dedicated to North Hudson Regional Fire and Rescue.

Newport Green Park, Jersey City (Map ID #60) – Newport Green Park, encompassing 5.08 acres, is owned by the City of Jersey City and is located at the intersection of Washington Boulevard and 14th Street. It consists of a sandy beach, playground area, and landscaped grass area. The park is located along the Hudson River waterfront walkway with views of the River as well as New York City.

Sixteen Hundred Park, Hoboken (Map ID #61) – Sixteen Hundred Park, encompassing 2.80 acres, is owned by the City of Hoboken and is located at 1600 Park Avenue. It consists of a multi-use field and a dog run.

19th Street Basketball Courts, Weehawken (Map ID #62) – 19th Street Basketball Courts, encompassing 0.24 acres, is owned by the Township of Weehawken and is located at the intersection of 19th Street and Park Avenue. It consists of basketball and handball courts.

Weehawken Pier and Lincoln Harbor Park, Weehawken (Map ID #64) – The pier stretches 450 feet into the Hudson River and includes five piers connected by aluminum bridges, with seating and lighting. The pier is collocated to Lincoln Harbor Park, which includes space for relaxation and sight-seeing. Both are at the intersection of Harbor and Port Imperial Boulevards.

Weehawken Waterfront Park and Recreation Center, Weehawken (Map ID #65) – The Waterfront Park and Recreation Center, encompassing 22.34 acres, is owned by the Township of Weehawken and is located along the Hudson River at Port Imperial Boulevard. It consists of two small playgrounds and the Hudson River Walk. The recreation facilities include turf soccer fields, two softball fields, a track, three tennis courts, and a workout area.

Hamilton Park, Weehawken (Map ID #67) – Hamilton Park, encompassing 3.86 acres, is owned by the Township of Weehawken and is located at 773 Boulevard East at Hudson Place. It consists of a landscaped lawn area with benches and a view of the New York City skyline. It also consists of several monuments and a Soldiers and Sailors Memorial.

Louisa Park, Weehawken (Map ID #71) – Louisa Park, encompassing 0.40 acres, is owned by the Township of Weehawken and is located at 915 JFK Boulevard East. It consists of a playground, two basketball courts, benches, and picnic tables and has views of the New York City skyline.

Township of Weehawken Veterans Park, Weehawken (Map ID #73) – Township of Weehawken Veterans Park, encompassing 0.16 acres, is owned by the Township of Weehawken and is located at 10 49th Street. It consists of a fenced-in grass area with benches and a view of the New York City skyline.

Old Glory Park, Weehawken (Map ID #74) – Old Glory Park, encompassing 10.32 acres, is owned by the Township of Weehawken and is located on John F. Kennedy Boulevard. It consists of a small landscaped area with benches and a view of New York City and the Hudson River.

Berry Lane Park, Jersey City (Map ID #88) – Berry Lane Park, encompassing 12.76 acres, is owned by the City of Jersey City and is located along Garfield Avenue. It consists of a baseball diamond, basketball courts, multi-purpose athletic fields, tennis courts, skate park, spray park, playground, and dog run. It also has a fitness court, walking path, and rain garden. The area was originally designated as a brownfield but was remediated through funding obtained by federal, state, county and local agencies and developed into parkland.

Virginia Avenue Park, Jersey City (Map ID #85) – Virginia Avenue Park, encompassing 0.28 acres, is owned by the City of Jersey City and is located at 74-80 Virginia Avenue. It consists of a gated playground as well as basketball courts.

Arthur Ashe Basketball Court, Jersey City (Map ID # 86) – Arthur Ashe basketball court, encompassing 0.13 acres, is owned by the City of Jersey City and is located at 285 Arlington Avenue. It consists of a fenced-in basketball court.

Bayside Park, Jersey City (Map ID #90) – Bayside Park, encompassing 9.27 acres, is owned by the City of Jersey City and is located at 99 Bayside Park Avenue. It consists of a baseball court, basketball court, playgrounds, and tennis courts. It also has a landscaped lawn and walking paths.

Russell Golding Park, Bayonne (Map ID #92) – Russell Golding Park, encompassing 0.41 acres, is owned by the City of Bayonne and is located along Avenue E. It consists of a spray park, basketball court, seating area, playground, and walking paths.

Sigmund “Ziggy” Mackiewicz Park, Bayonne (Map ID #93) – Sigmund “Ziggy” Mackiewicz Park, encompassing 0.15 acres, is owned by the City of Bayonne and is located at the corner of 40th Street and Avenue E. The park is dedicated to a Korean war veteran and Bayonne Fire Department Captain. The park consists of a fenced-in playground.

28th Street Playground, Bayonne – (Map ID #96) 28th Street Playground, encompassing 0.98 acres, is owned by the City of Bayonne and is located at Avenue F and East 28th Street. It consists of a walking trail, benches, playground, and basketball courts.

Sister Miriam Teresa Park, Bayonne (Map ID #98) – Sister Miriam Teresa Park, encompassing 0.87 acres, is owned by the City of Bayonne and is located at 2 Gregg Lane. It consists of a walking path, benches, and flowering gardens.

11th Street Oval Park, Bayonne (Map ID #100) – 11th Street Oval Park, encompassing 0.68 acres, is owned by the City of Bayonne and is located at the intersection of Avenue E and East 10th Street. It consists of a walking trail, benches, baseball field, and a playground.

Edward F. Clark Park, Bayonne (Map ID #101) – Mayor Edward Clark Park, encompassing 0.58 acres, is owned by the City of Bayonne and is located at the intersection of Avenue C and West 8th Street. It consists of a walking trail, benches, basketball court, wading pool, and playground.

4.2.2 Two-Mile Study Area (Project Component A)

Similar to Chapter 3, “Land Use, Zoning, and Public Policy”, a two-mile radius around the Main Facility (Preferred Alternative Project Component A) was delineated. Community facilities in this two-mile study area are discussed below.

Educational and Day Care Facilities

There are twenty-four educational facilities located within the two-mile study area, which are in Jersey City and Secaucus. The nearest school (The Ethical Community Charter School in Jersey City [Map ID #5]) is approximately 1.3 miles away from the Main Facility site. The educational facilities are listed in Table 4-1 below.

Law Enforcement and Fire Departments

There are five fire departments located in the two-mile study area. The closest fire department is Kearny Fire Department Station 4 (Map ID #20), located at 2 John Miller Way in the southern portion of the Kearny peninsula. The Jersey City Fire Department operates and maintains a hazardous materials response unit out of their locations.

There are four law enforcements facilities located within the two-mile study area (i.e., Map ID #14, 22, 44, and 45). The Hudson County Correctional Center (Map ID #14) is the closest law enforcement facility to Preferred Alternative Project Component A.

Healthcare and Emergency Services

There are no emergency service facilities located within the two-mile study.

Parkland and Publicly-Accessible Open Space

There are ten public parks within the two-mile study area:

Laurel Hill Park, Secaucus (Map ID #1) - Laurel Hill Park is owned by Hudson County and is considered a landmark in the North Jersey region because of its large igneous rock formations. Formerly a quarry, the remaining rock forms the southern edge of the park. This bedrock juts up approximately 111.83 feet at its highest point. The park offers ball fields, cricket and batting cages, playgrounds and picnic areas on the Hackensack waterfront.

Lincoln Park and Lincoln Park West, Jersey City (Map ID #7) - Lincoln Park, dating back to 1905, is owned by Hudson County and is situated on 252.52 acres with many historic points of interest, memorials and monuments. The park hosts a variety of athletic facilities, including 21 tennis courts, 7 baseball/softball diamonds, basketball courts, handball courts, soccer fields, an artificial surface multipurpose field, a running track, a cross-country course, and a horseshoe pit. There are also two playgrounds and a spray pool area for children. Visitors can take advantage of full-length trails, barbeque areas, and an enclosed dog run. The county recently added a 9-hole public golf course in Lincoln Park West and there are also fishing facilities.

Michael Martucci Sr. Memorial Little League Park, Jersey City (Map ID #10) – Michael Martucci Sr. Memorial Little League Park, encompassing 0.98 acres, is owned by the City of Jersey City and is located at 1020 Westside Avenue. It consists of a fenced-in little league park and soccer field.

LaPointe Park, Jersey City (Map ID #17) - LaPointe Park, encompassing 0.28 acres, is owned by Jersey City and located on Stuyvesant Avenue and Dekalb Avenue. The park is gated and locked when not in use. Facilities include a children's playground, a spray bollard, a plaza with seating, a picnic area, and benches.

Boyd McGuinness Park, Jersey City (Map ID #23) - Boyd McGuinness Park, encompassing 0.64 acres, is owned by the City of Jersey City and located on Kennedy Boulevard and Duncan Avenue. It consists primarily of a memorial, with a diagonal path running through the pocket park.

Leonard Gordon Park, Jersey City (Map ID #28) - Leonard Gordon Park is owned by Jersey City and is situated on 5.99 acres on the western slope of the Palisades between Kennedy Boulevard and Liberty Avenue in Jersey City Heights. The park contains a gazebo, a fenced children's playground, two basketball courts, a tennis court, and passive open space. Park statuary includes the *Buffalo and Bears*, a World War I Memorial Doughboy, a bronze reclining lion, and a granite memorial from the Raymond Sipnick Post of the Jewish War Veterans.

Terrace Avenue Park (Edward Crincoli Park, RA Park), Jersey City (Map ID #40) – These two parks encompass approximately 0.83 acre, owned by the City of Jersey City on Thorne Street. Wooded and gently sloping, these parks feature a tennis court, playground, spray bollard, and passive open space.

Reservoir No. 3, Jersey City (Map ID #42) - Reservoir No. 3, encompassing 13.94 acres, is owned by Jersey City and located on Central, Summit and Jefferson Avenues. It is contiguous to Pershing Field. It was a water-holding facility until it was closed in the 1970s and is still entirely surrounded by imposing stone walls. The park is used for only passive recreation due to the existing natural habitats on the park site.

Pershing Field Park, Jersey City (Map ID #46) - Pershing Field, encompassing 7.04 acres, is owned by the City of Jersey City and located on Central Avenue. It is one of the largest Jersey City-owned parks and is opposite the Reservoir No. 3 site. Facilities include an adult baseball field, a youth/little league baseball field, two basketball courts, bocce/shuffleboard courts, a running track, spray bollards, an indoor swimming pool and swimming bathhouses, a children's playground, community center, an ice-skating rink, and four tennis courts.

Richard W. DeKorte Park, Lyndhurst (Map ID #48) - Richard W. DeKorte Park is owned by the NJSEA. The 625.27-acre park features a landscaped capped landfill and trails leading out into wildlife observation areas and bird blinds. The 640-acre park also includes the Meadowlands Environment Center, which contains informative exhibits on the Meadowlands and its ecology, and the William D. McDowell Observatory.

Cemeteries

Cemeteries found within the two-mile study area of Project Component A are described below.

Holy Name Cemetery & Mausoleum (Map ID #4) – The Holy Name Cemetery & Mausoleum was established in 1866 at 823 West Side Avenue in Jersey City. The cemetery is approximately 63 acres in size and is an active cemetery for Catholic families.

Speer Cemetery (Map ID #25) – The Speer Cemetery was established in 1866 and is located at 145 Vroom Street in the City of Jersey City. The earliest grave marker is dated 1756. The cemetery is slightly larger than one acre in size. The last interments occurred during World War I.

Old Bergen Cemetery (Map ID #33) – The Old Bergen Cemetery was established in 1668 at the southwest corner of Bergen and Vroom Street in Jersey City. The last burial took place in 1945.

**Table 4-1 Community Facilities within 500 Feet of Proposed Electrical Line and/
or Two-Mile Study Area**

MAP ID #	FACILITY	ADDRESS	CITY	STUDY AREA
	<i>EDUCATIONAL AND DAY CARE FACILITIES</i>			
2	High Tech High School	1 High Tech Way	Secaucus	2 Mile
3	Knowledge Advanced Skills	1 High Tech Way	Secaucus	2 Mile
5	The Ethical Community Charter School	95 Broadway	Jersey City	2 Mile
6	Dr. Charles P. DeFuccio No. 39 Elementary School	214 Plainfield Avenue	Jersey City	2 Mile
8	Liberty High School	299 Sip Avenue	Jersey City	2 Mile
11	Mosdos Of Greenville	925 West Side Avenue	Jersey City	2 Mile
13	Mahatma K. Gandhi School – PS 23	143 Romaine Avenue	Jersey City	2 Mile
16	Saint Elizabeth Child Care	129 Garrison Avenue	Jersey City	2 Mile
18	Saint Aloysius Elementary Academy	721 West Side Avenue	Jersey City	2 Mile
19	Anthony J. Infante No. 31 Elementary School	3055 Kennedy Boulevard	Jersey City	2 Mile
21	Jersey City Golden Door Charter School	3044 Kennedy Boulevard	Jersey City	2 Mile
24	Franklin L. Williams School – MS 7	222 Laidlaw Ave	Jersey City	2 Mile
26	Saint Dominic Academy	2572 John F. Kennedy Boulevard	Jersey City	2 Mile
27	Learning Community Charter School	2495 John F. Kennedy Boulevard	Jersey City	2 Mile
29	Oasis Child Care	260 Hutton Street	Jersey City	2 Mile
30	Martin Luther King, Jr. – PS 11	886 Bergen Avenue	Jersey City	2 Mile
31	Little Smiles Preschool	70 Beach Street	Jersey City	2 Mile
32	Primary Prep	41 Tuers Avenue	Jersey City	2 Mile
35	Hudson Catholic Regional High School	790 Bergen Avenue	Jersey City	2 Mile
36	Dr. Paul Rafalides School PS #33	362 Union Street	Jersey City	2 Mile
37	Nicolaus Copernicus School – PS 25	3385 Kennedy Boulevard	Jersey City	2 Mile
39	Patricia M. Noonan School, PS#26	164 Laidlaw Avenue	Jersey City	2 Mile
43	Joseph H. Brensinger School – PS 17	600 Bergen Avenue	Jersey City	2 Mile
47	Jotham W. Wakeman No. 6 Elementary School	100 St. Pauls Avenue	Jersey City	2 Mile
50	Viaquenti Academy	837 Jersey Avenue	Jersey City	500-Foot
56	The Learning Experience	900 Monroe Street	Hoboken	500-Foot
57	Smart Start Academy	552 9th Street	Hoboken	500-Foot
59	River School Newport	30 Newport Parkway	Jersey City	500-Foot
68	Hudson County Community College	4800 Kennedy Boulevard	Union City	500-Foot
69	Union City Day Care	219 47th Street	Union City	500-Foot
76	Liberty Science Center	222 Jersey City Boulevard	Jersey City	500-Foot
77	Early Learning Academy	201 Marin Boulevard Unit 1A	Jersey City	500-Foot
78	Bright Horizons at Plaza 3- Waterfront	152 Plaza 3	Jersey City	500-Foot
79	Waterfront Montessori	150 Warren Street, Suite 108	Jersey City	500-Foot
82	Learning Ladders	33 Hudson Street	Jersey City	500-Foot

MAP ID #	FACILITY	ADDRESS	CITY	STUDY AREA
84	Advanced Services International DayCare Center	49-51 Morton Place	Jersey City	500-Foot
86	Learning Tree	411-413 Martin Luther King Drive	Jersey City	500-Foot
95	Lincoln Community School #5	208 Prospect Avenue	Bayonne	500-Foot
97	Nicholas Oresko #14	33 East 24th Street	Bayonne	500-Foot
99	Beacon Christian Academy	30 Prospect Avenue	Bayonne	500-Foot
102	Bayonne Head Start Program	21 West 8th Street	Bayonne	500-Foot
LIBRARIES				
9	Marion Library	1017 West Side Avenue	Jersey City	2 Mile
LAW ENFORCEMENT & FIRE DEPARTMENTS				
14	Hudson County Correctional Center	30-35 Hackensack Avenue	Kearny	2 Mile
15	Jersey City Fire Department - Engine 15 Ladder 9	200 Sip Avenue	Jersey City	2 Mile
20	Kearny Fire Department Station 4	2 John Miller Way	Kearny	2 Mile
22	Jersey City Police Department	1 Journal Square Plaza – Division of Police - Floor 4	Jersey City	2 Mile
34	Jersey City Fire Department - Engine 7 Ladder 3	715 Summit Avenue	Jersey City	2 Mile
38	Jersey City Fire Department Engine 9	697 Bergen Avenue	Jersey City	2 Mile
41	Jersey City Fire Department - Engine 11	152 Lincoln Street	Jersey City	2 Mile
44	Hudson County Prosecutor's Office	595 Newark Avenue	Jersey City	2 Mile
45	Hudson County Sheriff's Office	595 Newark Avenue	Jersey City	2 Mile
55	Hoboken Fire Department Engine Company 1/ Ladder Company 2	43 Madison Street	Hoboken	500-Foot
63	North Hudson Regional Fire and Rescue	11 Port Imperial Boulevard	West New York	500-Foot
70	North Hudson Regional Fire and Rescue Ladder 3	1900 Willow Avenue in Weehawken	Weehawken	500-Foot
72	North Hudson Regional Fire and Rescue Squad 1	4911 Broadway	West New York	500-Foot
HEALTHCARE AND EMERGENCY SERVICES				
75	Jersey City Medical Center	355 Grand Street	Jersey City	500-Foot
89	Metropolitan Family Health Network	935 Garfield Avenue	Jersey City	500-Foot
94	Bayonne Medical Center	29 East 29 th Street	Bayonne	500-Foot
PARKLAND AND PUBLICLY-ACCESSIBLE OPEN SPACE				
1	Laurel Hill Park	Laurel Hill Road	Secaucus	2 Mile
7	Lincoln Park	Duncan Avenue	Jersey City	2 Mile
10	Michael Martucci Sr. Memorial Little League	1020 Westside Avenue	Jersey City	2 Mile
17	LaPointe Park	Dekalb Avenue	Jersey City	2 Mile
23	Boyd McGuinness Park	Duncan Avenue	Jersey City	2 Mile
28	Leonard Gordon Park	John F. Kennedy Boulevard	Jersey City	2 Mile
40	Terrace Avenue Park (Edward Crincoli Park, RA Park)	Thorne Street	Jersey City	2 Mile
42	Reservoir No. 3	Reservoir Avenue	Jersey City	2 Mile
46	Pershing Field Park	201 Central Avenue	Jersey City	2 Mile

MAP ID #	FACILITY	ADDRESS	CITY	STUDY AREA
48	Richard W. DeKorte Park	1 DeKorte Park	Lyndhurst	2 Mile
49	Riverview-Fisk Park	Ogden Avenue	Hoboken	500-Foot
51	Washington Park	198 New York Avenue	Union City	500-Foot
52	Southwest Resiliency Park	58 Jackson Street	Hoboken	500-Foot
53	Mama Johnson Park	400 Jackson Street	Hoboken	500-Foot
54	Gateway Park	653 Newark Street	Hoboken	500-Foot
58	Firefighters Memorial Park	906 Palisade Avenue	Union City	500-Foot
60	Newport Green Park	Washington Boulevard & 14 th Street	Jersey City	500-Foot
61	Sixteen Hundred Park	1600 Park Avenue	Hoboken	500-Foot
62	19th Street Basketball Courts	19th Street and Park Ave.	Weehawken	500-Foot
64	Weehawken Pier and Lincoln Harbor Park	Port Imperial Boulevard	Weehawken	500-Foot
65	Weehawken Waterfront Park and Recreation Center	1 Port Imperial Boulevard	Weehawken	500-Foot
67	Hamilton Park	773 Boulevard East	Weehawken	500-Foot
71	Louisa Park	915 JFK Boulevard East	Weehawken	500-Foot
73	Township of Weehawken Veterans Park	10 49 th Street	Weehawken	500-Foot
74	Old Glory Park	John F. Kennedy Boulevard	Weehawken	500-Foot
80	Liberty State Park	200 Morris Pesin Drive	Jersey City	500-Foot
81	Korean War Veterans Park	Washington Street	Jersey City	500-Foot
83	J. Owen Grundy Park	Hudson Street	Jersey City	500-Foot
85	Virginia Avenue Park	74-80 Virginia Avenue	Jersey City	500-Foot
87	Arthur Ashe Basketball Court	285 Arlington Avenue	Jersey City	500-Foot
88	Berry Lane Park	1000 Garfield Avenue	Jersey City	500-Foot
90	Bayside Park	99 Bayside Park Drive	Jersey City	500-Foot
92	Russell Golding Park	Avenue E and East 49 th Street	Bayonne	500-Foot
93	Sigmund Mackiewicz Park	40 th Street	Bayonne	500-Foot
96	28 th Street Park and Avenue F	28 th Street	Bayonne	500-Foot
98	Sister Mariam Theresa Park	2 Gregg Lane	Bayonne	500-Foot
100	11th Street Oval Park	Avenue E and East 10 th Street	Bayonne	500-Foot
101	Edward F. Clark Park	Avenue C and West 8 th Street	Bayonne	500-Foot
CEMETERIES				
4	Holy Name Cemetery & Mausoleum	823 West Side Avenue	Jersey City	2 Mile
25	Speer Cemetery	145 Vroom Street	Jersey City	2 Mile
33	Old Bergen Church Cemetery	806 Bergen Avenue	Jersey City	2 Mile
12	Saint Peters Cemetery	309 Tonnelle Avenue	Jersey City	500-Foot
66	Grove Church Cemetery	1132 46 th Street	North Bergen	500-Foot
91	Bay View- New York Bay Cemetery	321 Garfield Avenue	Jersey City	500-Foot

4.3 PROBABLE IMPACTS OF THE PROJECT ALTERNATIVES

4.3.1 No Action Alternative

Under the No Action Alternative, the proposed Project would not be constructed and NJ TRANSIT and Amtrak would continue to be served by the existing commercial grid. Without the microgrid, commuter and intercity rail service in Amtrak's and NJ TRANSIT's core service territory would remain vulnerable to power outages. There would be a missed opportunity to increase commuter safety and security in future widespread power outages. Under the No Action Alternative, other planned and programmed transportation improvements for which commitment and financing have been identified would be implemented by 2021. These include projects in NJ TRANSIT's Resilience Program, Amtrak initiatives that will affect operations on the Northeast Corridor, and HCIA plans for warehousing development on portions of the Koppers Koke Site.

As stated above, there are two planned residential developments in Jersey City near the proposed electrical line routes that will include publicly-accessible open space. The former Van Leer Chocolate Factory residential condominium complex (currently under construction) will include a 1.5-acre public park and a two-acre public park will be developed along Coles Street in a larger (5.5 acre) mixed-use development. These residential developments will be completed under the No Action Alternative.

In the absence of the proposed Project, Amtrak has plans to completely replace and rebuild Substation No. 41. Amtrak is currently proceeding with reconstruction of certain elements of Substation No. 42, located east of the project area at the entrance to the North River Tunnels in Weehawken, NJ, including the installation of a new Control House. Under the No Action Alternative, NJ TRANSIT intends to acquire the 20-acre parcel (Preferred Alternative Project Component A) on the Koppers Koke Site as well as the six-acre parcel (Preferred Alternative Project Component B) located south of the Morris & Essex Line (due to a property settlement, as described in Chapter 2). The No Action Alternative will not result in any changes or impacts to community facilities or services, parkland, or open space in the study areas.

4.3.2 Build Alternative

There are no community facilities, parklands, or publicly accessible open space resources within the construction footprint of the Build Alternative. As previously noted, the community facilities identified on Figure 4-1 and Table 4-1 (Map IDs 2, 3, 19, 21, 24, 34, 42, 66, 68, 69, 75, 77, 78, 82 and 83) are located where Preferred Alternative Project Component E travels through the Bergen Tunnels or where Preferred Alternative Project Component G travels through the Weehawken Tunnel or along the bypassed track for Preferred Alternative Project Component G. Although community facilities are located along these project components, these transportation and utility uses have co-existed with such facilities and therefore, no direct or indirect impact on community facilities would result from operation of the proposed Project.

According to NJDEP's Recreation and Open Space Inventory (ROSI) (NJDEP 1996) and a Green Acres Program letter dated November 22, 2017, three properties within the 500-foot study areas of Preferred Alternative Project Component G are Green Acres encumbered. However, no construction from the proposed Project will occur within these NJDEP Green Acres encumbered properties and a reply

notification was sent on December 1, 2017. NJDEP Green Acres accepted the notification and it has been deemed that this proposed Project will not impact properties encumbered by NJDEP Green Acres (see Appendix D).

As described in Chapter 6, “Air Quality,” and Appendix B, “Air Quality Technical Appendix,” the proposed Main Facility (Preferred Alternative Project Component A) would utilize combined-cycle natural gas turbine technology, and efficient and modern combustion equipment and control devices. Air quality modeling was conducted for the project using standard EPA modeling techniques and meteorological data. The receptor grid extended five miles from the facility’s stacks, more than covering the study area, and receptors were placed at schools, health care facilities, and other sensitive receptor locations, such as parklands. Impacts for all of the criteria pollutants were below the applicable ambient air quality standards at all receptors. Therefore, no significant air quality impacts would occur from the operation of the Main Facility. Preferred Alternative Project Component F includes a nanogrid (i.e., two emergency generators) at HBLR Headquarters that will provide emergency power to the southern portion of the HBLR independently of the microgrid during emergencies only. During normal conditions, both engines of the nanogrid would only be run for maintenance once a month for one hour. During emergency conditions, the nanogrid in Preferred Alternative Project Component F would be in full-time operation, but the commercial grid would not be producing power for Preferred Alternative Project Components F and G (i.e., by definition these would not be receiving power from the commercial grid), so emissions from operating the nanogrid during emergencies would be somewhat offset by the reduction in emissions from the reduced output of the commercial grid.

As indicated in Chapter 16, “Safety and Security,” the operation of the Build Alternative would not result in adverse health or safety impacts at community facilities or to the general public. Based on the electrical characteristics of the transmission system, no electromagnetic field (EMF) effects on public health would occur. Additionally, under evacuation scenarios, commuters would have access to designated central meeting points, such as schools, hospitals, and safe shelters.

Operation of the Main Facility would employ approximately 30 full-time staff, who may or may not reside locally. As a result, there would be little measurable population impact (if any) attributable to the proposed Project and thus, operation of the new facility would not place additional demand on community services or have an adverse impact on the ability of local service providers to provide such services.

Operation of the Main Facility is not expected to have an adverse impact on the ability of local departments to provide police and fire services (or on the NJ TRANSIT Police Department). Preferred Alternative Project Components A and B would be fenced and access-controlled. Personnel would be on duty 24 hours a day and available to respond to concerns within the Main Facility. Onsite security features would minimize opportunities for theft and vandalism. The Main Facility would have its own fire prevention, protection, and fire detection system. This would include a non-water based fire suppression system and dedicated water storage system, hose stations, and fire pump systems. Water storage dedicated to fire protection use would be provided onsite in accordance with or exceeding code requirements. Facility staff would receive basic fire suppression training, which would cover only small

fires that can be controlled and/or extinguished with rack hoses and fire extinguishers. If a fire exceeds the resources available, assistance from the local fire department would be requested. The Main Facility would be designed to allow full access for firefighting and hazardous materials response vehicles.

4.4 SUMMARY OF SIGNIFICANT ADVERSE IMPACTS MITIGATION MEASURES

Under normal operating conditions, there would be no impact (adverse or favorable) to community facilities, parkland, or publicly-accessible open space resources in the project area. Since the Build Alternative will provide resilient electric power to Amtrak and NJ TRANSIT rail lines, including during emergency conditions that disrupt the commercial power grid, there would be a realized positive impact for the local community to have access to central meeting points. The proposed Project would not result in temporary or permanent impacts to parkland or Green Acres/6(f) parkland properties, and no further documentation is required. As a result, mitigation measures for the Build Alternative are not required.